



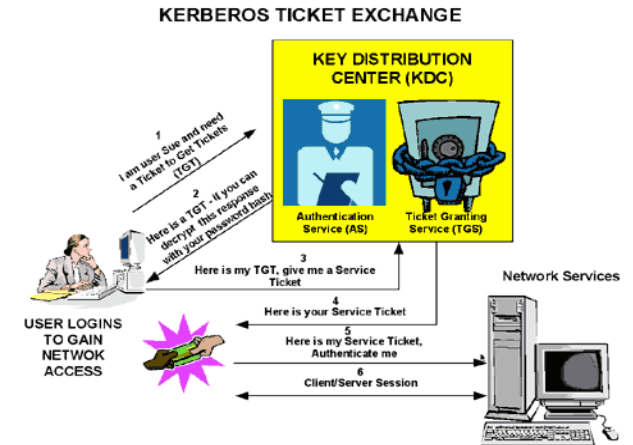
Password Power 8 Plug-In for Lotus Domino SSO via Kerberos Secure Access to All Domino Web Applications

Browser-Based
Single Sign-On
Using
Microsoft
Active Directory

Remove Need to Manage Separate Passwords for Domino Web applications

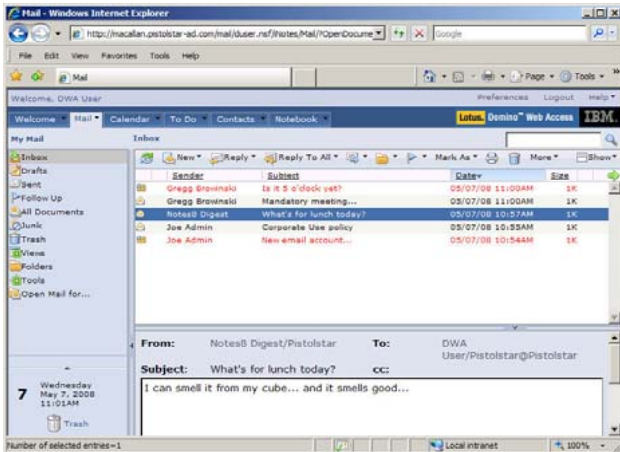
- ◆ End-user and server are mutually authenticated, preventing server attacks and malicious programs that impersonate the server to get end-user's information
- ◆ No passwords are sent over the network
- ◆ Further integration with Windows and Active Directory, enabling users on Windows 2000, XP and Vista to just login to a Windows domain at the start of their workday.

Use the Kerberos Authentication Protocol and Microsoft Active Directory for Single Sign-On Access to all Domino HTTP sessions, including Lotus iNotes, Same-time, QuickPlace and Domino Web Applications



Stronger Authentication = Secure Access to Multiple Applications

- ◆ Kerberos connects to a central Key Distribution Center (KDC), such as a Microsoft Active Directory domain controller.
- ◆ End-users authenticate to the KDC, requesting encrypted *service tickets* for the specific service they wish to use (e.g. Web servers).
- ◆ Only the service and the KDC can decrypt the service ticket to get the end-user's authentication information.
- ◆ The Password Power Domino Server API (DSAPI) filter parses out the service ticket, validates it and extracts the Kerberos (Active Directory) name from the ticket (e.g. user's email address).
- ◆ The DSAPI filter signals Domino the end-user has been authenticated, sending it the end-user's authenticated name. Access to the requested service is achieved and an HTTP session token is set in the end-user's browser, enabling them to avoid repeated or full Kerberos authentication.



Authentication is complete once the DSAPI filter validates the service ticket and extracts the Kerberos (Active Directory) name from the ticket.

No Proprietary Database
Seamless Client Install – No Servers Required
No Schema Changes Required to Active Directory

